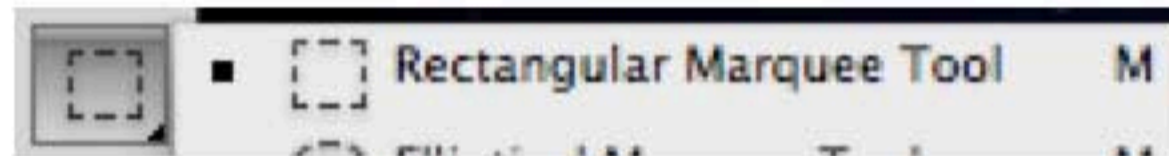


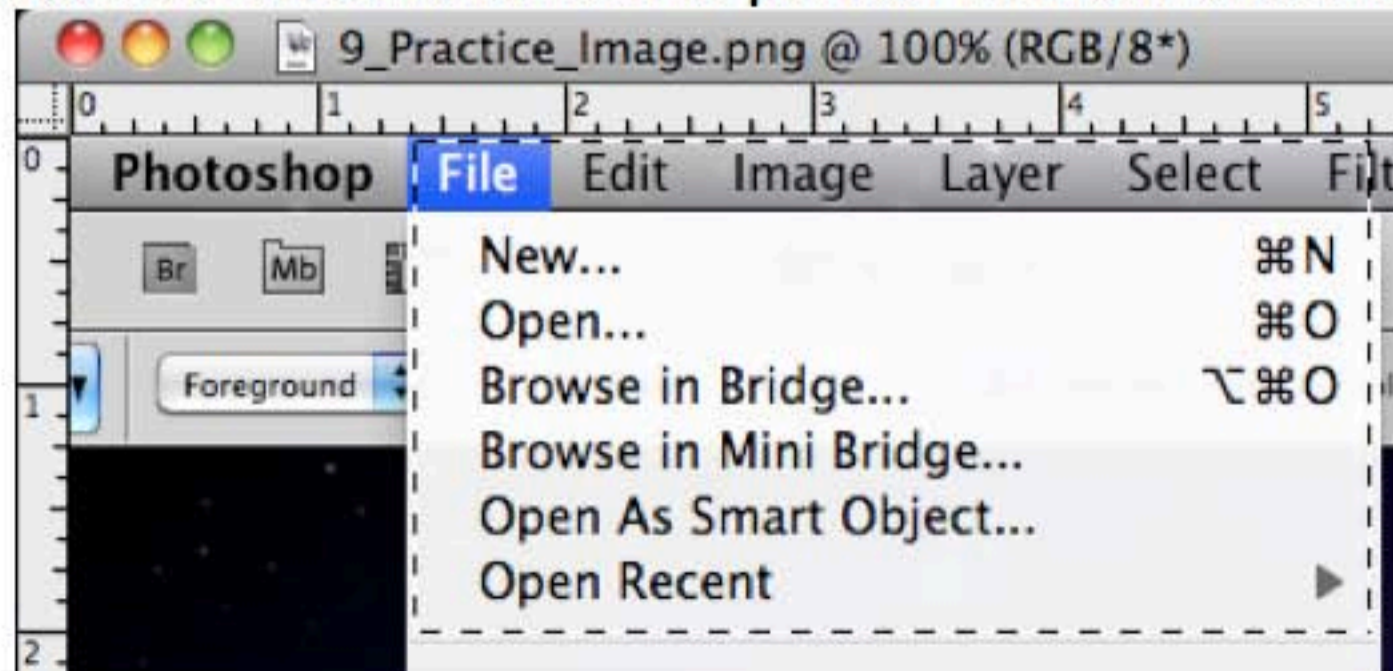


# Blurred Menu

1. *Open* Photoshop.
2. *Navigate* to **File > Open...**
3. *Select* the image **Assignment\_9\_Practice\_Image** from your **Need to Catch Up** folder.
4. *Select* your **Rectangular Marquee Tool** by *pressing M* on your keyboard.

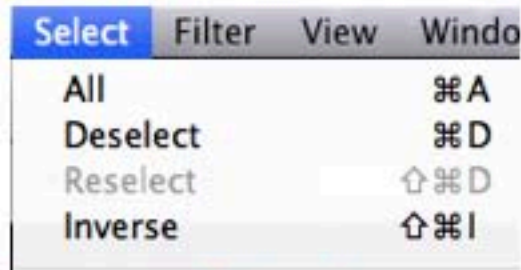


5. *Drag* a **rectangular selection** around this portion of the menu until it looks like this:



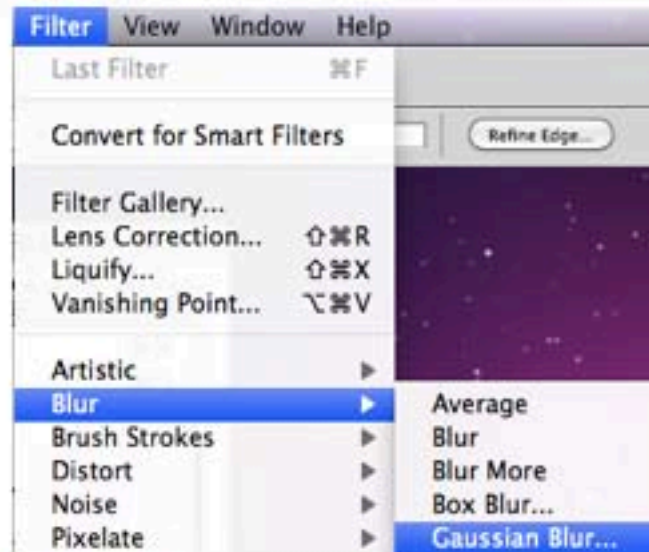
*Didn't get the selection right?  
Press **Command + D** and redo the selection until you get it right!  
**DO NOT** go to **Step 6** until your selection looks like mine.*

## 6. Navigate to **Select > Inverse**



*What did you just do? In **Step 5** you told Photoshop to select a piece of the photo you just opened. This piece will be in **focus** while the rest of the image will be **blurry**. In order to make everything but the selection blurry you had to **INVERSE** the selection.*

## 7. Navigate to **Filter > Blur > Gaussian Blur**



8. When the **Gaussian Blur** menu appears make certain the **Radius** is set to **2.5** pixels.

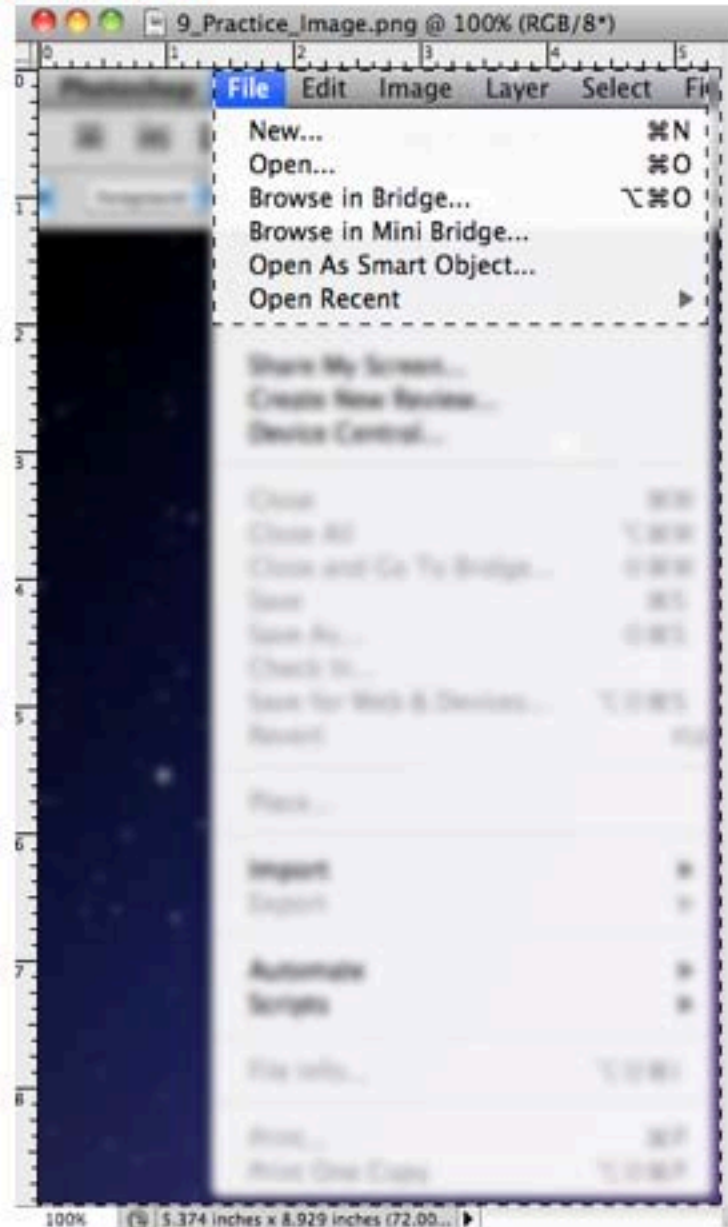


## 9. Press **OK**

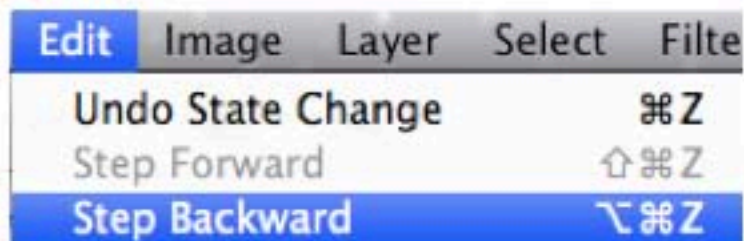
**IF** you did everything correct, your image *should look like the image on the next page*. **IF** it doesn't, **READ** the **RED** text to fix it!

# THIS IS WHAT SHOULD HAVE HAPPENED TO YOUR IMAGE:

If the result does NOT look like this:



Navigate to **Edit > Step Backward**



Press **Command + D** to *deselect* the “marching ants”

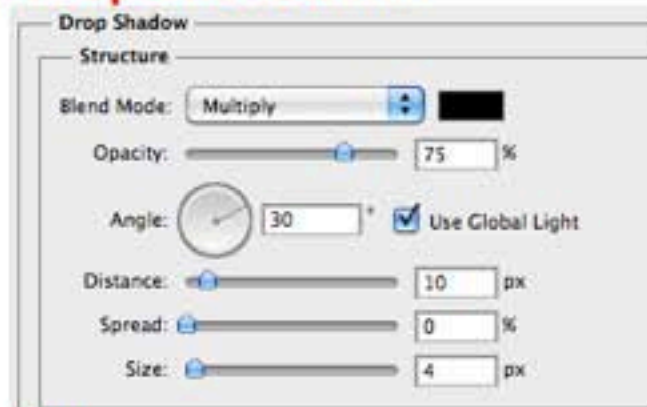
and **REDO Steps 5-to-9 CAREFULLY** until you get it right!

**GO TO NEXT PAGE TO GET INSTRUCTIONS ON  
COMPLETING THIS ASSIGNMENT**

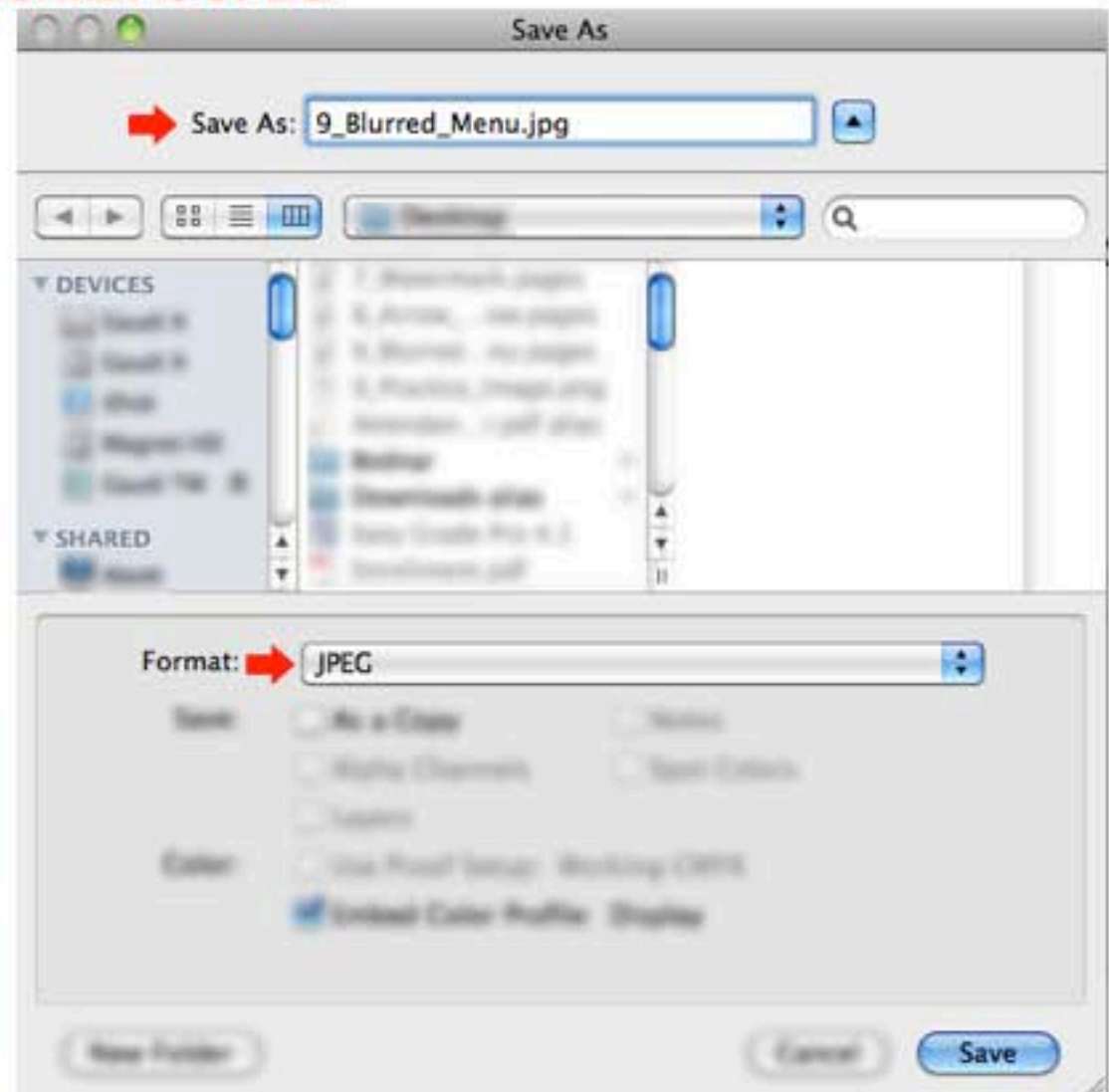
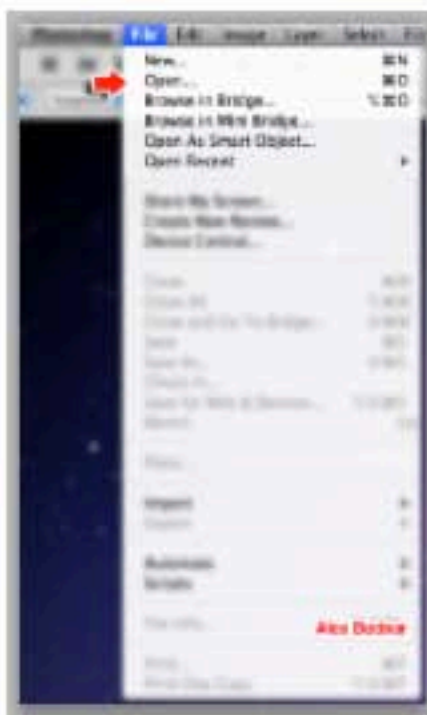
10. Press **Command + D** to *deselect* the “marching ants”

11. Using your skills from the previous lessons, you must add the following to complete this assignment:

- **Red arrow** that points to the word **Open...**
- The **red arrow** must have a **white Stroke** of **3 pixels**
- The **red arrow** must have a **Drop Shadow** with:



- A **red watermark** with **your full name**
- Your **watermark / full name** must have a **White Stroke** of **3 pixels**
- Once you have those **two red** items, you must *navigate* to **Layer > Flatten Image**
- **Save as... 9\_Blurred\_Menu** *IN your flash drive*
- **Don't forget to change the format to JPEG**



Mr. Bodnar purposely screen captured the final image (left side) in **LOW** resolution to prevent students from simply copying his image. If done correctly, **YOUR** completed **9\_Blurred\_Menu.jpg** will be automatically saved at a higher resolution!